

描述 / Descriptions

TO-252 塑封封装电压调整器。 Voltage Regulator in a TO-252 Plastic Package.

特征 / Features

高效率、低压差,输出电流达到 800mA,内设过流、过热保护。

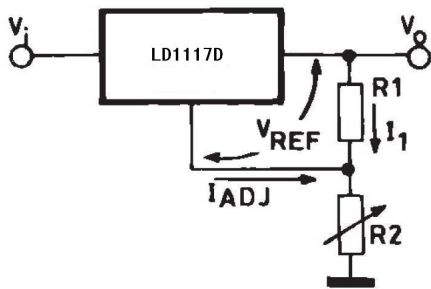
High efficiency, Low dropout voltage(1V T_{YP} .)output current up to 800mA, internal current and thermal limit.

用途 / Applications

电压调整器。

Voltage Regulator.

内部等效电路 / 应用电路 Equivalent Circuit or Application Circuit



引脚排列 / Pinning



PIN1 : GND/ADJ

PIN 2,4 : OUT

PIN 3 : IN

印章代码 / Marking

见印章说明。 See Marking Instructions.

极限参数 / Absolute Maximum Ratings(Ta=25°C)

参数 Parameter	符号 Symbol	数值 Rating	单位 Unit
Input voltage	V _I	15	V
Thermal Resistance Junction-case	R _{θJC}	8	°C/W
Storage temperature range	T _{stg}	-40~150	°C

电性能参数 / Electrical Characteristics(Ta=25°C)

参数 Parameter	符号 Symbol	型号 Type	测试条件 Test Conditions	最小值 Min	典型值 Typ	最大值 Max	单位 Unit
Reference Voltage	V _{ref}	LD1117D- Adj	V _{in} -V _o =2V T _j =25°C I _o =10mA	1.225	1.25	1.275	V
			10mA≤I _o ≤800mA 1.4V≤(V _{in} -V _o)≤10V	1.225	1.25	1.275	
Output Voltage	V _o	LD1117D-1.2	V _{in} =3.2V T _j =25°C I _o =10mA	1.176	1.2	1.224	V
			10mA≤I _o ≤800mA, 3V≤V _{in} ≤8V	1.176	1.2	1.224	
		LD1117D-1.8	V _{in} =3.8V T _j =25°C I _o =10mA	1.764	1.8	1.836	V
			0≤I _o ≤800mA, 3.3V≤V _{in} ≤8V	1.764	1.8	1.836	
		LD1117D-2.5	V _{in} =4.5V T _j =25°C I _o =10mA	2.45	2.5	2.55	V
			0≤I _o ≤800mA, 3.9V≤V _{in} ≤10V	2.45	2.5	2.55	
		LD1117D-3.3	V _{in} =5.3V T _j =25°C I _o =10mA	3.234	3.3	3.366	V
			0≤I _o ≤800mA, 4.75V≤V _{in} ≤10V	3.234	3.3	3.366	
		LD1117D-5.0	V _{in} =7V T _j =25°C I _o =10mA	4.9	5	5.1	V
			0≤I _o ≤800mA, 6.5V≤V _{in} ≤15V	4.9	5	5.1	
Load Regulation	ΔV _o	LD1117D-Adj	V _{in} -V _o =3V 10mA≤I _o ≤800mA			30	mV
		LD1117D-1.2	V _{in} =3V 10mA≤I _o ≤800mA			30	mV
		LD1117D-1.8	V _{in} =3.3V 0mA≤I _o ≤800mA			30	mV
		LD1117D-2.5	V _{in} =3.9V 0mA≤I _o ≤800mA			30	mV
		LD1117D-3.3	V _{in} =4.75V 0mA≤I _o ≤800mA			30	mV
		LD1117D-5.0	V _{in} =6.5V 0mA≤I _o ≤800mA			30	mV

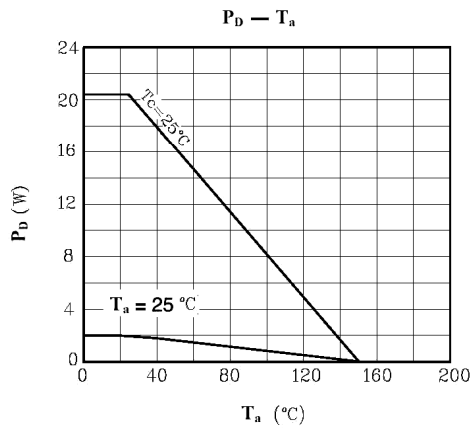
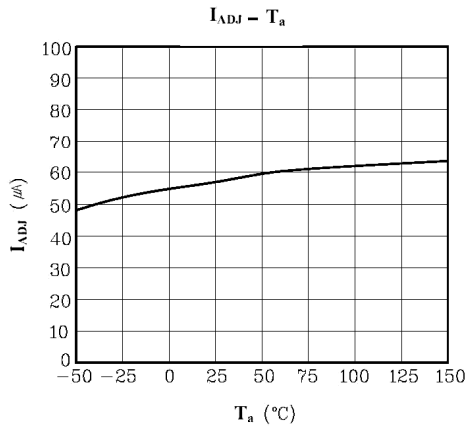
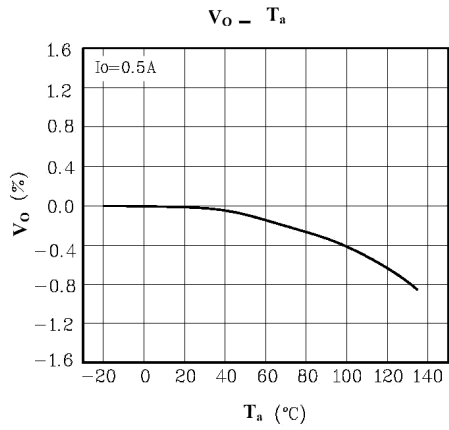
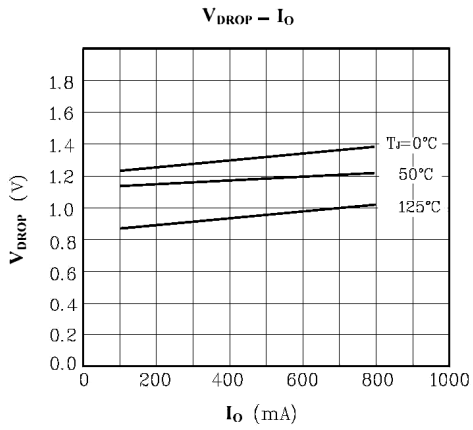
电性能参数 / Electrical Characteristics(Ta=25°C)

参数 Parameter	符号 Symbol	型号 Type	测试条件 Test Conditions	最小值 Min	典型值 Typ	最大值 Max	单位 Unit
Line Regulation	ΔV_o	LD1117D-Adj	$I_o=10mA$ $1.5V \leq (V_{in}-V_o) \leq 13.75V$			23	mV
		LD1117D-1.2	$3V \leq V_{in} \leq 8.0V$ $I_o=0mA$			18	mV
		LD1117D-1.8	$3.3V \leq V_{in} \leq 8.0V$ $I_o=0mA$			31	mV
		LD1117D-2.5	$3.9V \leq V_{in} \leq 10V$ $I_o=0mA$			40	mV
		LD1117D-3.3	$4.75V \leq V_{in} \leq 15V$ $I_o=0mA$			48	mV
		LD1117D-5.0	$6.5V \leq V_{in} \leq 15V$ $I_o=0mA$			55	mV
Operating Input Voltage	V_{in}	LD1117D-Adj				15	V
		LD1117D-1.2	$I_o=100mA$			10	
		LD1117D-1.8				10	
		LD1117D-2.5				15	
		LD1117D-3.3				15	
		LD1117D-5.0				15	
Adjustment Pin Current	I_{adj}	LD1117S-Adj		$V_{in} \leq 15V$		60	120
Adjustment Pin Current Change	ΔI_{adj}		$1.4V \leq V_{in}-V_o \leq 10V,$ $0mA \leq I_o \leq 800mA$		1	5	
Quiescent Current	I_d	LD1117D-1.2	$V_{in} \leq 8V$		5	10	mA
		LD1117D-1.8	$V_{in} \leq 8V$				
		LD1117D-2.5	$V_{in} \leq 10V$				
		LD1117D-3.3	$V_{in} \leq 15V$				
		LD1117D-5.0					
Output Current	I_o	LD1117D-Adj	$V_{in}-V_o=5V$ $T_j=25^\circ C$	600	800	1000	mA
		LD1117D-1.2					
		LD1117D-1.8					
		LD1117D-2.5					
		LD1117D-3.3					
		LD1117D-5.0					
Output Noise	e_N	LD1117D-Adj	$10Hz \leq B \leq 10KHz$ $T_j=25^\circ C$		0.003		%
		LD1117D-1.2					
		LD1117D-1.8					
		LD1117D-2.5			100		uV
		LD1117D-3.3					
		LD1117D-5.0					

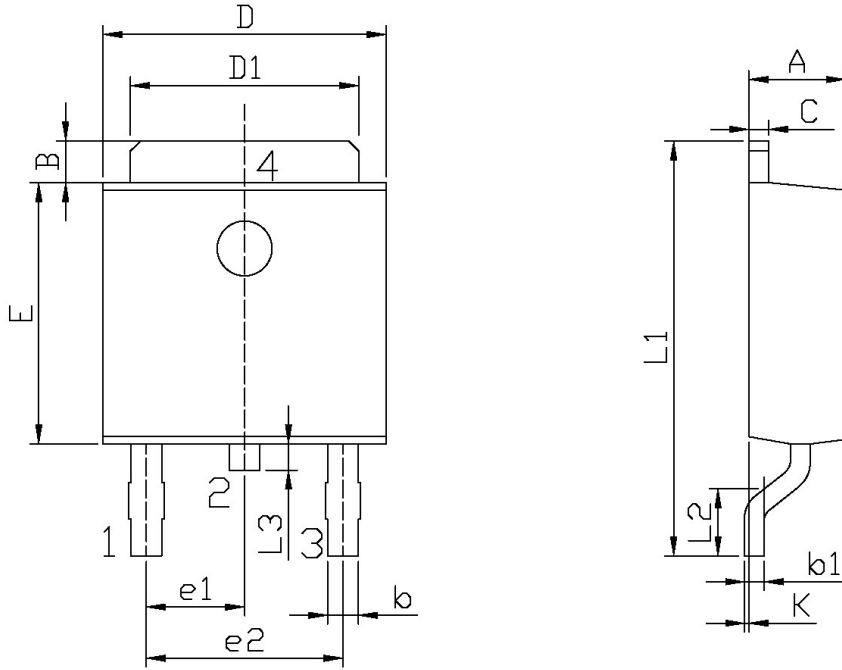
电性能参数 / Electrical Characteristics(Ta=25°C)

参数 Parameter	符号 Symbol	型号 Type	测试条件 Test Conditions	最小值 Min	典型值 Typ	最大值 Max	单位 Unit
Supply Voltage Rejection	SVR	LD1117D-Adj	Io=40mA f=120Hz, Tj=25°C Vin-Vo=3V, Vripple=1Vpp	60	75		dB
		LD1117D-1.2					
		LD1117D-1.8					
		LD1117D-2.5					
		LD1117D-3.3					
		LD1117D-5.0					
Dropout Voltage	Vd	LD1117D-Adj	Io=100mA Io=500mA Io=800mA		1.00	1.10	V
		LD1117D-1.2					
		LD1117D-1.8					
		LD1117D-2.5					
		LD1117D-3.3					
		LD1117D-5.0					
Thermal Regulation		LD1117D-Adj	Ta=25°C 30ms Pulse		0.01	0.1	%W
		LD1117D-1.2					
		LD1117D-1.8					
		LD1117D-2.5					
		LD1117D-3.3					
		LD1117D-5.0					

电参数曲线图 / Electrical Characteristic Curve



外形尺寸图 / Package Dimensions

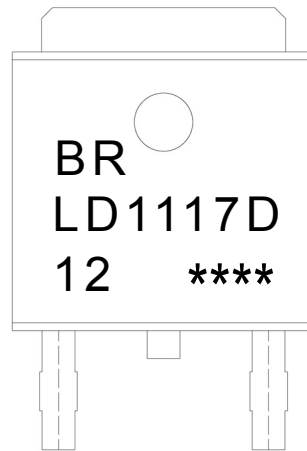


单位: mm

Symbol	Dimensions In Millimeters		Symbol	Dimensions In Millimeters	
	Min	Max		Min	Max
A	2.20	2.40	E	5.95	6.25
B	0.95	1.25	e1	2.24	2.34
b	0.50	0.70	e2	4.43	4.73
b1	0.45	0.55	L1	9.45	9.95
C	0.45	0.55	L2	1.25	1.75
D	6.45	6.75	L3	0.60	0.90
D1	5.10	5.50	K	0.00	0.10

TO-252

印章说明 / Marking Instructions



说明：

BR： 为公司代码

LD1117D： 为产品型号

12： 代表 1.2V

****： 为生产批号代码，随生产批号变化。

Note:

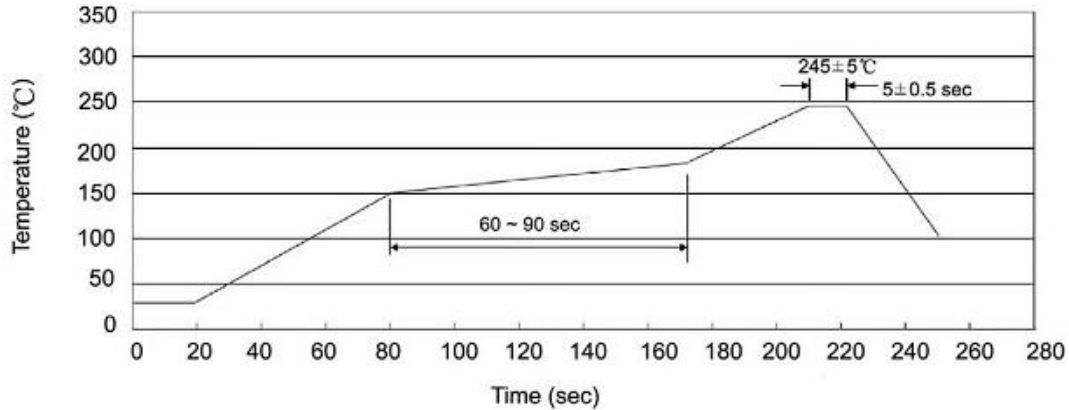
BR: Company Code.

LD1117D: Product Type.

12: On Behalf 1.2V

****: Lot No. Code, code change with Lot No.

回流焊温度曲线图(无铅) / Temperature Profile for IR Reflow Soldering(Pb-Free)



说明：

- 1、预热温度 150~180°C，时间 60~90sec;
- 2、峰值温度 245±5°C，时间持续为 5±0.5sec;
- 3、焊接制程冷却速度为 2~10°C/sec.

Note:

- 1.Preheating:150~180°C, Time:60~90sec.
- 2.Peak Temp.:245±5°C, Duration:5±0.5sec.
3. Cooling Speed: 2~10°C/sec.

耐焊接热试验条件 / Resistance to Soldering Heat Test Conditions

温度：260±5°C

时间：10±1 sec.

Temp:260±5°C

Time:10±1 sec

包装规格 / Packaging SPEC.

卷盘包装 / REEL

Package Type 封装形式	Units 包装数量					Dimension 包装尺寸 (unit: mm ³)		
	Units/Reel 只/卷盘	Reels/Inner Box 卷盘/盒	Units/Inner Box 只/盒	Inner Boxes/Outer Box 盒/箱	Units/Outer Box 只/箱	Reel	Inner Box 盒	Outer Box 箱
TO-252	2,500	2	5,000	5	25,000	13" ×16	360×360×50	385×257×392

套管包装 / TUBE

Package Type 封装形式	Units 包装数量					Dimension 包装尺寸 (unit: mm ³)		
	Units/Tube 只/套管	Tubes/Inner Box 套管/盒	Units/Inner Box 只/盒	Inner Boxes/Outer Box 盒/箱	Units/Outer Box 只/箱	Tube 套管	Inner Box 盒	Outer Box 箱
TO-251/252	75	48	3,600	5	18,000	526×20.5×5.25	555×164×50	575×290×180

使用说明 / Notices